

T6500 High Pressure Gauge

FEATURES

- High pressure up to 100,000 psi (6,895 bar)
- Solid front all welded stainless steel case
- 100mm and 160mm case size
- Weatherproof protection IP66
- Dry, liquid filled or **PLUS!**™ Performance option

TYPICAL USES

- Water jet applications
- Water blaster applications



T6500
100mm & 160mm dial size



SPECIFICATIONS

Accuracy:	1% of span for ranges to 60,000 psi. Ranges > 60,000 psi 1.6% of span
Size:	100mm, 160mm
Range:	30,000 psi, 40,000 psi, 60,000 psi, 80,000 psi, 100,000 psi
Process Conn. Location:	Lower
Process Conn. Size:	1/16-18UNF-2B right or left handed thread M16 x 1.5 Female
Case Style:	Stainless steel solid front with full rear blowout back
Movement:	Adjustable
Window Material:	Safety glass (STD.), polycarbonate (OPT.)
Dial:	Aluminum, white background, black figures and intervals
Pointer:	Aluminum
Weather Protection:	Dry: IP66/67 and NEMA 4X Liquid filled: IP66/67 and NEMA 4X
Dampening Options:	PLUS! ™ Performance, glycerin, silicone or halocarbon® filled case
Mounting:	Stem and surface
Approvals:	CE

WETTED COMPONENTS

Bourdon Tube	Process Connection	Joints
Inconel 718	316 SS	Welded

KEY BENEFITS

- Compact 100mm, stainless steel case retrofits competitive gauges
- Ranges to 100,000 psi to meet industry requirements
- All welded stainless steel case for demanding applications

NON-WETTED COMPONENTS

Case	Ring	Back Cover
304 SS (STD.)	304 SS	304 SS
316 SS (OPT.)	316 SS	316 SS

MIN/MAX TEMPERATURE LIMITS

Version	Ambient	Process	Storage
Dry	-40°F to 158°F (-40°C to 70°C)	-40°F to 392°F (-40°C to 200°C)	-40°F to 158°F (-40°C to 70°C)
PLUS! ™	-40°F to 158°F (-7°C to 70°C)	-40°F to 200°F (-40°C to 93°C)	-40°F to 158°F (-40°C to 70°C)
Glycerin fill	19°F to 158°F (-7°C to 70°C)	19°F to 200°F (-7°C to 93°C)	-40°F to 158°F (-40°C to 70°C)
Silicone fill	-40°F to 158°F (-7°C to 70°C)	-40°F to 200°F (-40°C to 93°C)	-40°F to 158°F (-40°C to 70°C)
Halocarbon® fill	-40°F to 158°F (-40°C to 70°C)	-40°F to 200°F (-40°C to 93°C)	-40°F to 158°F (-40°C to 70°C)

T6500 High Pressure Gauge

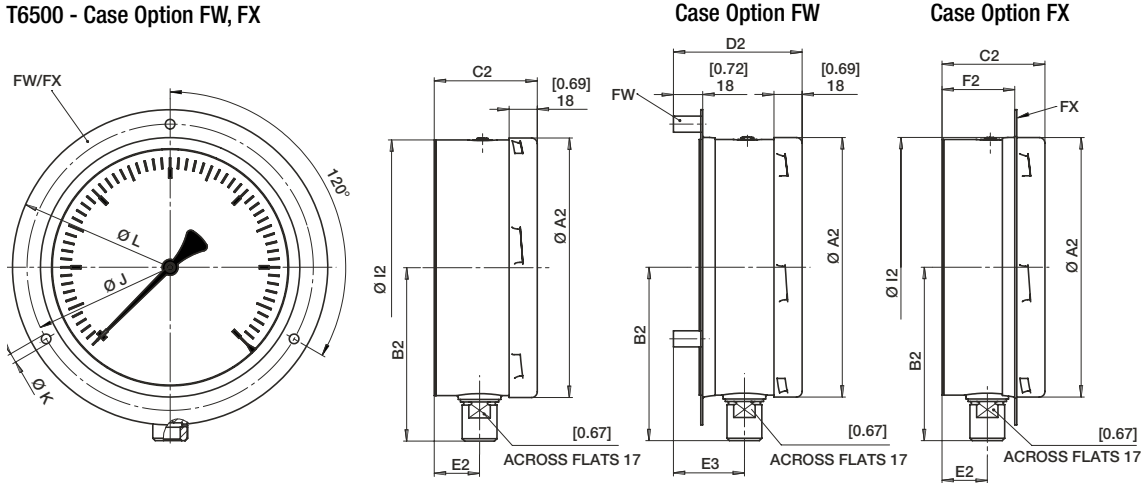
ORDERING CODE	Example:	10T6500	W	D	09	L	60000#	XGV
Dial Size/Model Code								
10T6500 -100mm - 304 stainless steel case, solid front		10T6500						
16T6500 -160mm - 304 stainless steel case, solid front								
System (tube and process connection)								
W - Inconel 718/316L stainless steel			W					
Case Design								
D - Dry				D				
L - Liquid fill (glycerine standard, throttle rod standard with liquid filled case)								
Process Connection Sizes								
09 - 1/16-18 UNF-2B high pressure fitting right handed					09			
29 - 1/16-18 UNF-2B high pressure fitting left handed								
54 - M16 x 1.5 Female								
Process Connection Location								
L - Lower						L		
Range								
Single Scales								
25000# - 25,000 psi								
30000# - 30,000 psi								
40000# - 40,000 psi								
60000# - 60,000 psi							60000#	
80000# - 80,000 psi								
100000# - 100,000 psi								
Options (If choosing an option(s) must include an "X")								
								X__
Dampening								
GV - Silicone fill								GV
GX - Halocarbon® case fill								
LL - PLUS! ™ Performance								
NZ - PLUS! ™ Performance, silicone free								
TS - Throttle rod (standard with liquid filled gauge)								
Case								
FW - Wall mounting flange								
FX - Front flange tack welded to case								
YW - 316L stainless steel case								
Windows/Pointers/Dial								
PD - Polycarbonate window								
EP - Maximum pointer and polycarbonate window								
EQ - Minimum pointer and polycarbonate window								
SH - Red set hand, stationary (dry case only)								
D3 - DuraVis™ Retroreflective Dial (100mm only, dry case only)								
Other								
NH - Stainless steel tag wired to case								
C4 - Individual calibration chart								

T6500 High Pressure Gauge

DIMENSIONS in [] are millimeters

For reference only, consult Ashcroft for specific dimensional drawings.

T6500 - Case Option FW, FX



T6500											
Dial Size	A2	B2	C2	D2	E2	E3	F2	J	K	L	Weight
100 mm	3.97	3.36	2.38	2.91	1.02	1.55	1.63	4.65	0.24	5.20	Dry 0.9 lbs
	[101]	[85]	[61]	[74]	[26]	[39]	[42]	[118]	[6]	[132]	LF 2.7 lbs
160 mm	6.35	4.54	2.52	3.15	1.11	1.74	1.78	7.01	0.24	7.72	Dry 2.7 lbs
	[161]	[115]	[64]	[80]	[28]	[44]	[45]	[178]	[6]	[196]	LF 4.4 lbs